



Indore Institute of Pharmacy

Affiliated to - BQPV(Bhopal) | Approved by - AICTE(New Delhi) & PCI(New Delhi)
Register - Under UBC (P)

Criterion 4 - Infrastructure and Learning Resources

4.1.3 - Number of classrooms and seminar halls with ICT- enabled facilities such as smart class, LMS, etc.

S.NO.	CONTENT	PAGE NO.
1	Declaration	1
2	Details of 9 classrooms with classroom no. and Area.	2
3	Details of Seminar hall and Auditorium.	2
4	Geotagged Photos of 9 Classroom, Seminar Hall and Auditorium with computer, Projector and Wi-fi	3-7
5	ICT Infrastructure Facility Available in the Institute	8-10
6	ICT Various Tools Available in the Institute	11-12



1
Principal
Indore Institute of Pharmacy,
INDORE (M.P.)



Indore Institute of Pharmacy

Affiliated to - BPPV (Bhopal) | Approved by - AICTE (New Delhi) & PCI (New Delhi)
Register - Under UGC 2(F)

Date : 02 / Dec / 2024

Declaration

This is to certify that the Indore Institute of Pharmacy, Indore (M.P.) is following all rules and regulations as prescribed by statutory bodies (PCI). The Institute has adequate infrastructure and physical facilities for teaching determined by Affiliation University.

Prasad
2/12/24

Dr. Nimita Manocha

Principal

IIP, Indore



2
Principal
Indore Institute of Pharmacy
INDORE (M.P.)



Indore Institute of Pharmacy

Affiliated to - RUP (Bhopal) (Approved by - AICTE (New Delhi) & PCI (New Delhi))
Register - Under UGC (2F)

Details of classroom with classroom no. and Area.

S.NO.	FLOOR	CLASSROOM	AREA
1	1 ST	B-1	75sqmts
2	1 ST	B-2	75sqmts
3	2 ND	B-3	75sqmts
4	2 ND	B-4	75sqmts
5	2 ND	M-1	75sqmts
6	2 ND	M-2	75sqmts
7	3 RD	D-1	75sqmts
8	3 RD	PD-1	75sqmts
9	3 RD	PD-2	75sqmts

Details of Seminar hall and Auditorium.

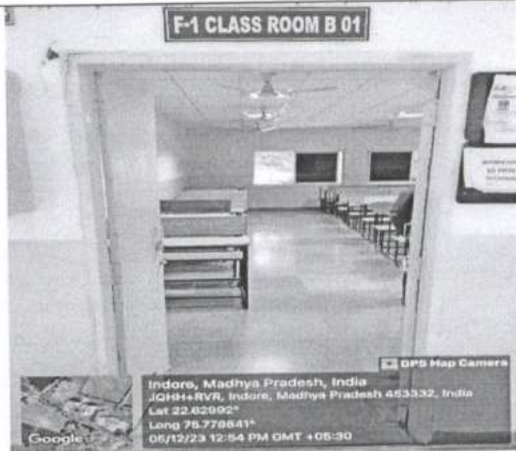
S.NO.	FLOOR	CATEGORY
10	G-B	AUDITORIUM-1
11	G-C	AUDITORIUM-1
12	G	SEMINAR HALL
13	F-B	CONFERENCE ROOM
14	F	MEETING ROOM



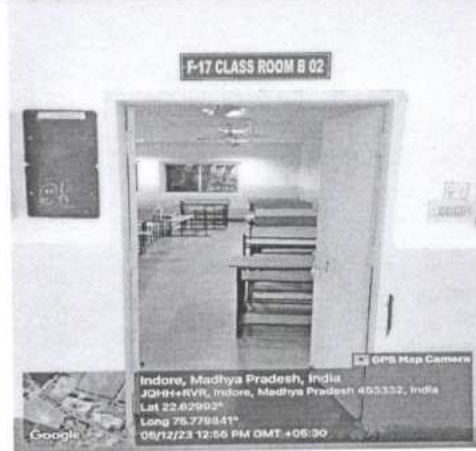

Principal
Indore Institute of Pharmacy,
INDORE (M.P.)



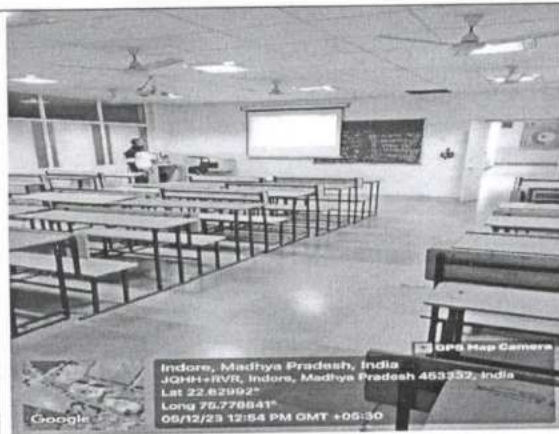
I. Classrooms



Classroom B1: Front view



Classroom B2: Front view



Classroom B1: Inner view



Classroom B2: Inner View



Classroom B3: Front view



Classroom B4: Front view





Indore Institute of Pharmacy

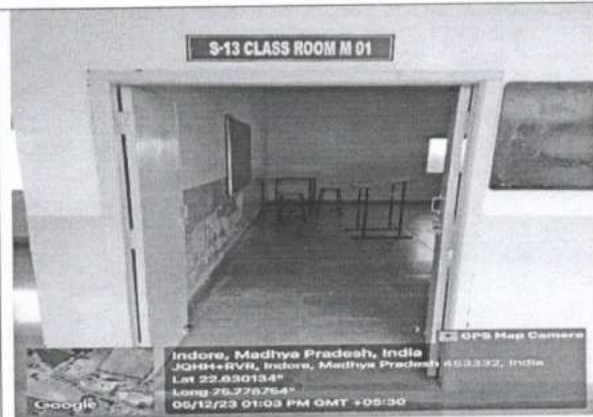
Affiliated to - BPPU(Bhopal) (Approved by - AICTE(New Delhi) & PCI(New Delhi)
Register - Under UGC (IIT)



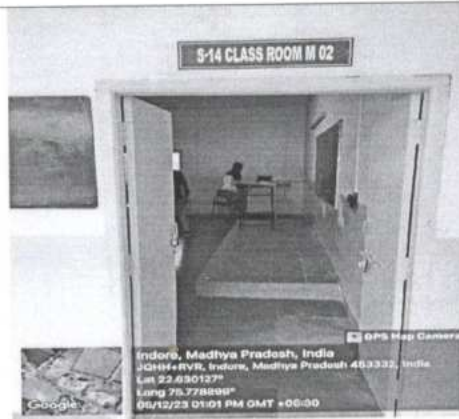
Classroom B3: Inner view



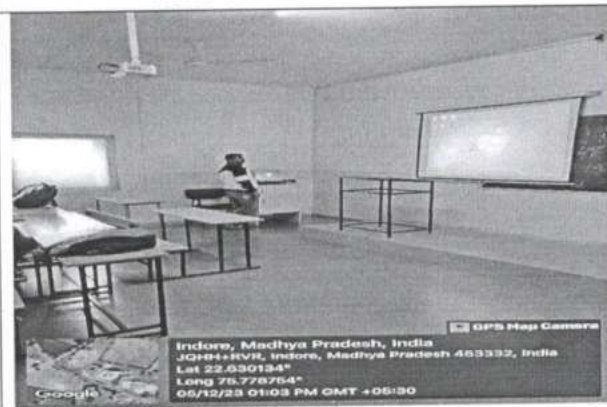
Classroom B4: Inner View



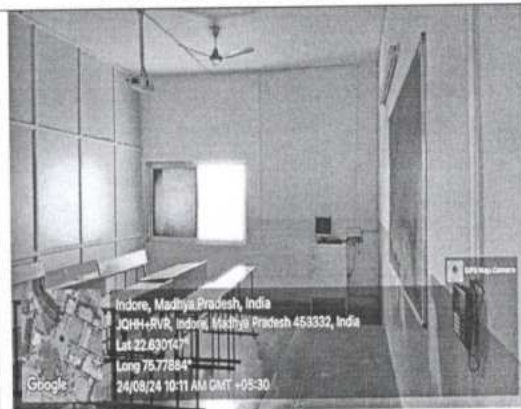
Classroom M1: Front view



Classroom M2: Front view



Classroom M1: Inner view



Classroom M2: Inner View



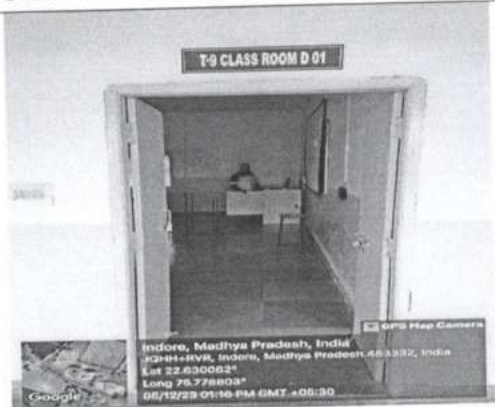
Principal
Indore Institute of Pharmacy,
INDORE (M.P.)



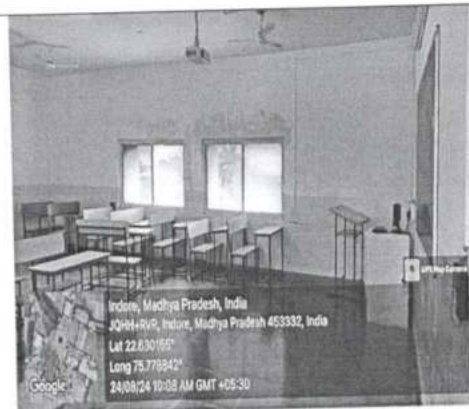
Indore Institute of Pharmacy

Affiliated to - MPU(Bhopal) [Approved by - AICTE(New Delhi) & PCI(New Delhi)]
Registered - Under UGC 1956

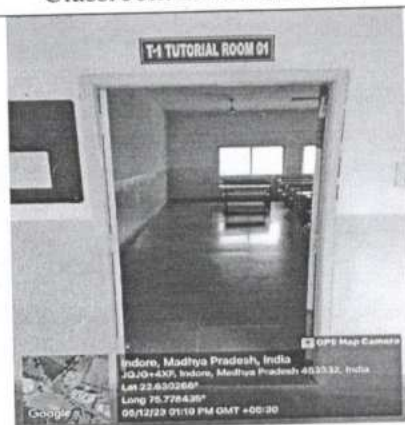
1. Classrooms



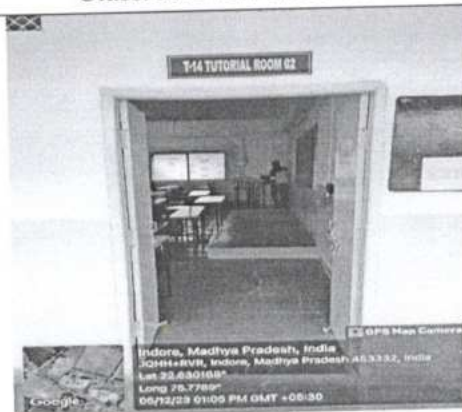
Classroom D1: Front view



Classroom D1: Inner view



Classroom PD 1: Front view



Classroom PD 2: Front view



Classroom PD 1: Inner view



Classroom PD 2: Inner view



Principal
Indore Institute of Pharmacy
INDORE (M.P.)



Indore Institute of Pharmacy

Affiliated to - RGPV(Bhopal) (Approved by - AICTE(New Delhi) & PCI(New Delhi)
Register - Under UGC 2(F)

AUDITORIUM

Photo of Auditorium 1

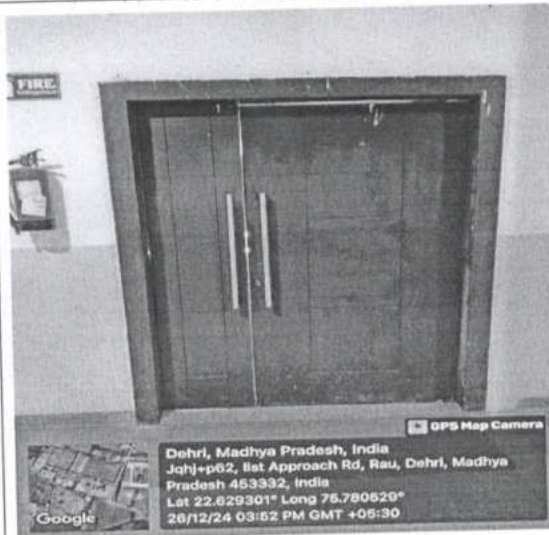
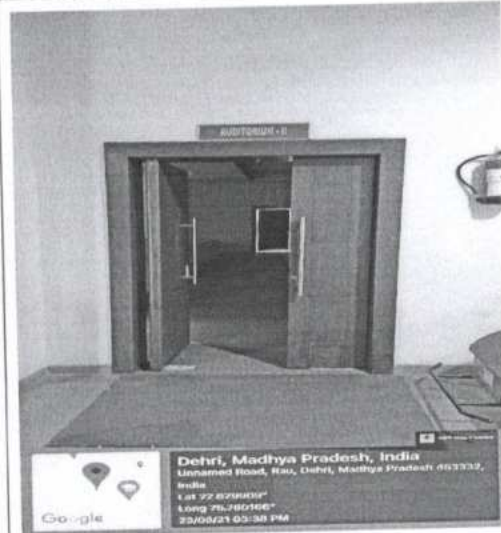
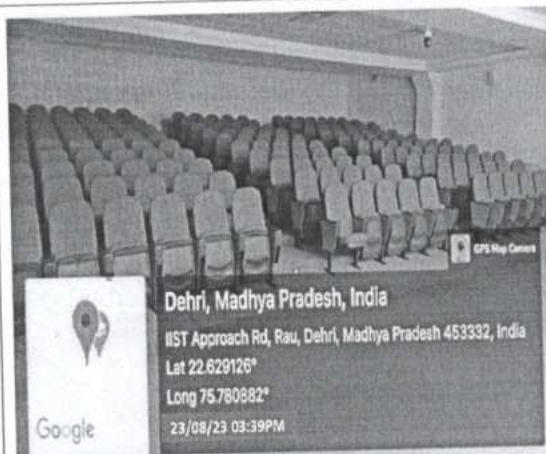


Photo of Auditorium 2



Inner photo of Auditorium 1



Inner photo of Auditorium 2





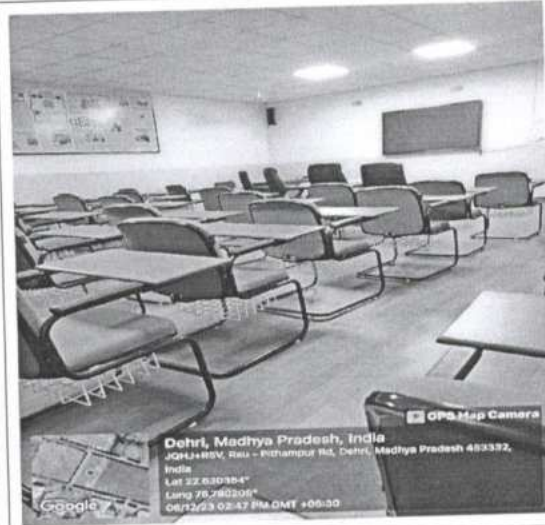
Indore Institute of Pharmacy

Affiliated to - RDPU(Bhopal) | Approved by - AICTE(New Delhi) & PCI(New Delhi)
Register - Under UGC Act

SEMINAR HALL



Front View: Seminar Hall



Inner View: Seminar Hall



Inner View: Meeting Room



Front View: Conference Hall



Principal
Indore Institute of Pharmacy,
INDORE (M.P.)

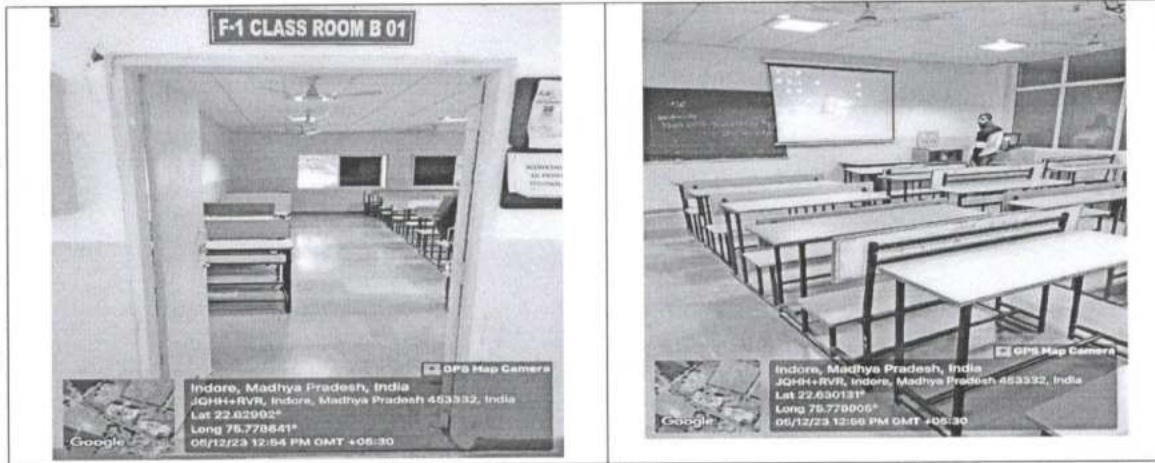


Indore Institute of Pharmacy

Affiliated to - MPU(Bhopal) | Approved by - AICTE(New Delhi) & PCI(New Delhi)
Register - Under UGC (IIP)

ICT Infrastructure Facility Available in the Institute

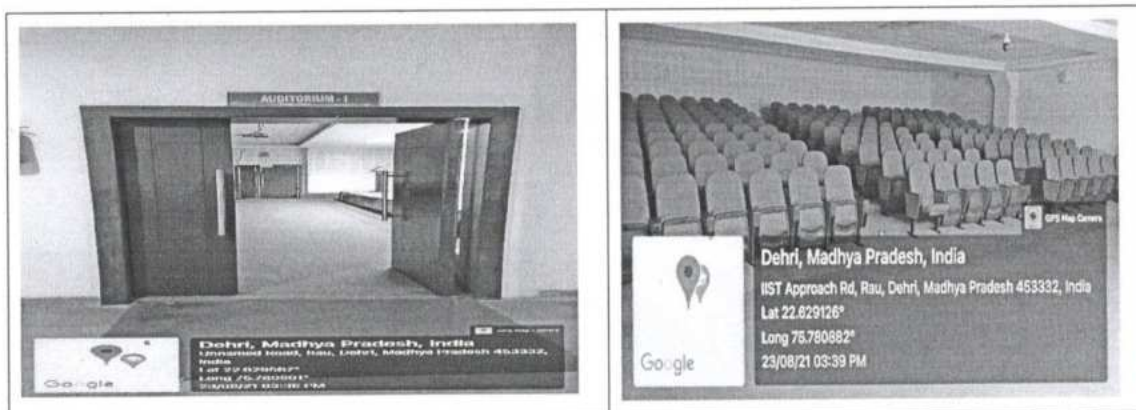
1. ICT Enabled Class Room



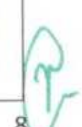
2. ICT Enabled Seminar Hall



3. ICT Enabled Auditorium



Principal
Indore Institute of Pharmacy
INDORE (M.P.)

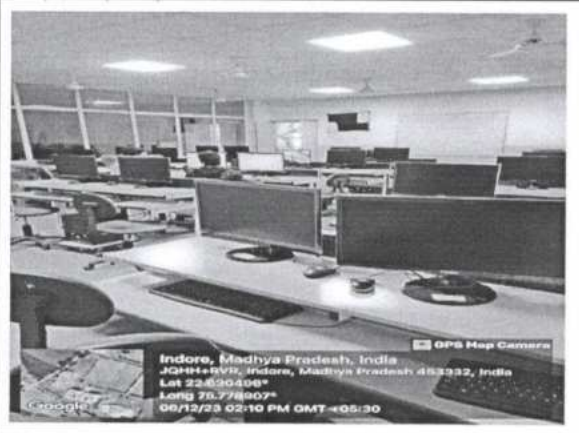
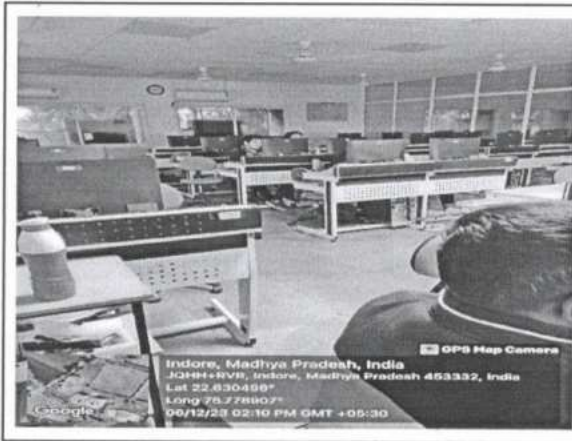




Indore Institute of Pharmacy

Affiliated to - BPPU(Bhopal) | Approved by - AICTE(New Delhi) & PCI(New Delhi)
Register - Under UGC Act

4. ICT Enabled Lab



Principal
Indore Institute of Pharmacy
INDORE (M.P.)



Indore Institute of Pharmacy

Affiliated to - RGPU (Rohatki) (Approved by - AICTE (New Delhi) & PCI (New Delhi))
Register - Under UGC (2P)

5. Digital Learning

The institute has a well- equipped Computer lab with 62 computers in two labs, licensed software, and a LAN facility. Institute is well equipped with wired and wireless internet access and that can be also accessed in classrooms, libraries, labs, corridors, auditoriums; seminar halls, and all dwelling areas. High-Speed Internet facility- The institute upgraded its internet leased line (1:1) bandwidth from 50 Mbps to 310 Mbps bandwidth on the whole campus. During COVID-19, the Institution has shifted to an online learning process through different platforms and also adopts different ICT tools for example: - MS Team, Zoom, Google classroom, and institute's LMS. To encourage a blended learning mode, classrooms / labs are prepared with a camera-enabled system. The Academic guidelines have been changed during the COVID-19 for the smooth conduct of all academic activities. Assessment and evaluation of internal examinations have been done online using Google classroom.

Now -> Mastering ERP



TAX INVOICE

(ORIGINAL FOR RECIPIENT)

INVOICE NO.: 202425-01-171

INVOICE DATE: 1-MAY-2024

Bill To,

SHAIL EDUCATION & WELFARE SOCIETY

IIST COLLEGE

RAU

INDORE

GST STATE CODE : 23 MADHYA PRADESH Customer GSTIN : Not Available

Invoice summary	
Type of Service:	Internet
Internet Bandwidth	300 Mbps 1:1
Billing period	01-04-2024 to 30-04-2024
Recurring charges	₹ 24,576.27
Central GST @ 9 %	₹ 2,211.86
State GST @ 9 %	₹ 2,211.86
Total Current Charges	₹ 29,000.00
Previous Dues	₹ .00
Total Amount Due	₹ 29,000.00

GSTIN : 23AACCR8280J1Z6	HSN/SAC: 9984	CHQ. /NEFT IN FAVOR OF - RAJESH PATEL NET SERVICES PVT. LTD.
PAN NO.: AACCR8280J		A/C NO. 0040R3800005501 IFSC: YESB0000040 BANK: YESBANK
CIN NO.: U64202MP2003PTC015954		

TERMS & CONDITION:

- PLEASE PAY YOUR BILL BEFORE 7TH OF THE MONTH TO AVOID DISCONNECTION.
- FOR TERMINATION & DEGRADATION OF SERVICE AT LEAST ONE-MONTH NOTICE SHOULD BE GIVEN IN PRIOR.
- VOIP IS STRICTLY PROHIBITED ON YOUR INTERNET CONNECTION.
- WE SHALL NOT BE LIABLE TO THE CUSTOMER FOR ANY LOSS, COSTS OR DAMAGE WHATSOEVER OR HOWSOEVER CAUSED, ARISING DIRECTLY OR INDIRECTLY IN CONNECTION WITH THE SERVICE/S.
- FOR ANY QUERIES PLEASE CONTACT AT +91 98930 73966, 0731-4026313

FOR RAJESH PATEL NET SERVICES PVT. LTD.

P

[Signature]
AUTHORISED SIGNATORY

RAJESH PATEL NET SERVICES (P) LIMITED

10/5 M.G. ROAD, BEHIND HDFC HOUSE INDORE - 452001
PHONE: +91-731-4026313 E-MAIL: info@rpnapi.com



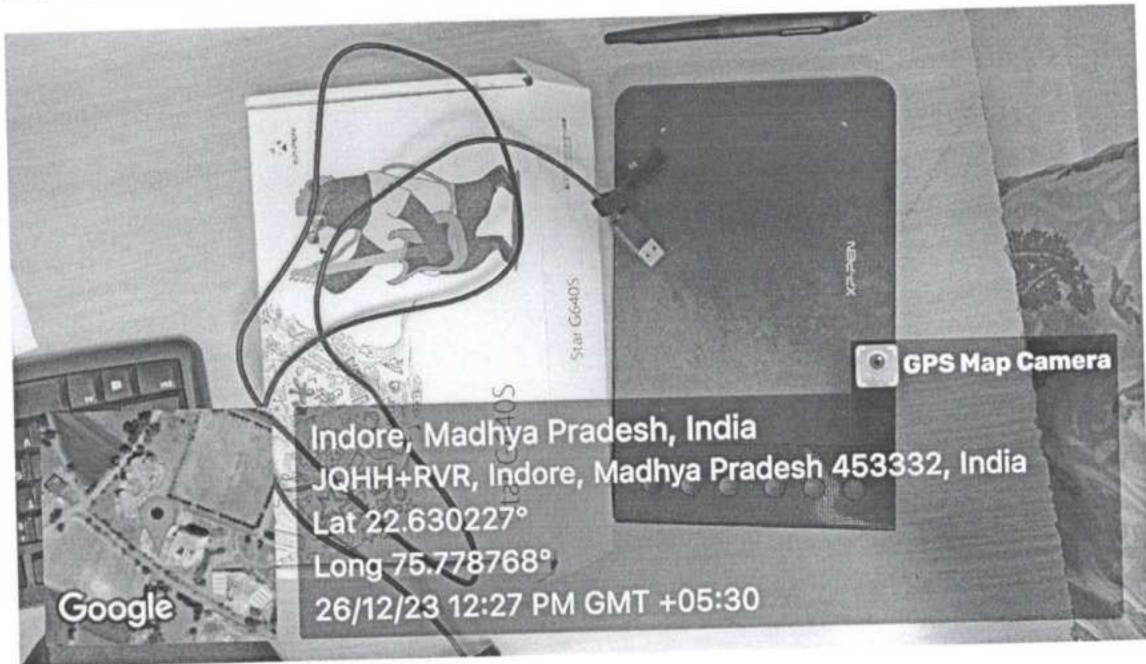
[Signature]
Principal
Indore Institute of Pharmacy
INDORE (M.P.)



Indore Institute of Pharmacy

Affiliated to - RGPV(Bhopal) (Approved by - AICTE(New Delhi) & PCI(New Delhi)
Register - Under UBC 2(F)

ICT Various Tools Available in the Institute



Digital Slate



Video Cam



Document Camera- Visualize

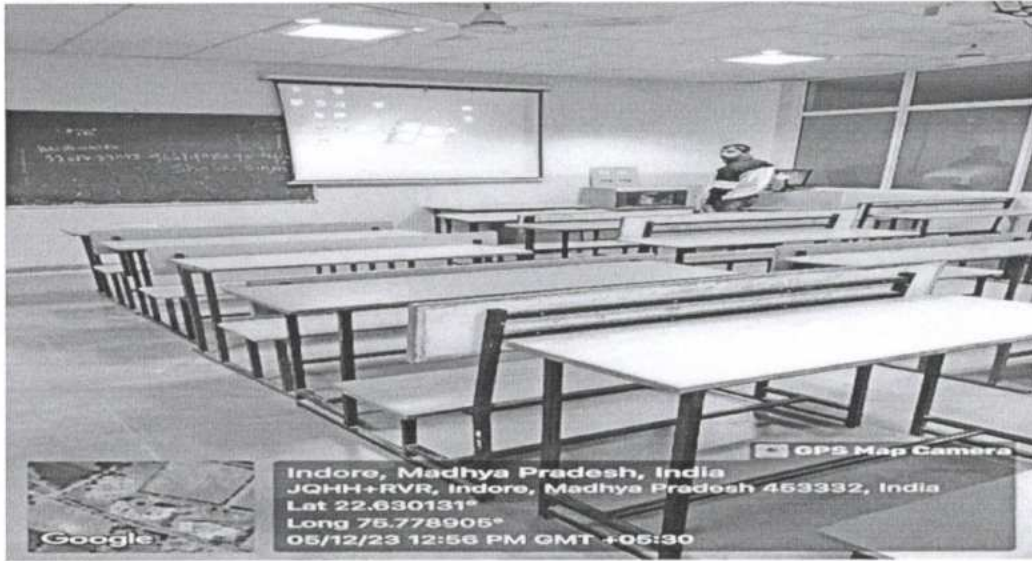



Principal
Indore Institute of Pharmacy,
INDORE (M.P.)

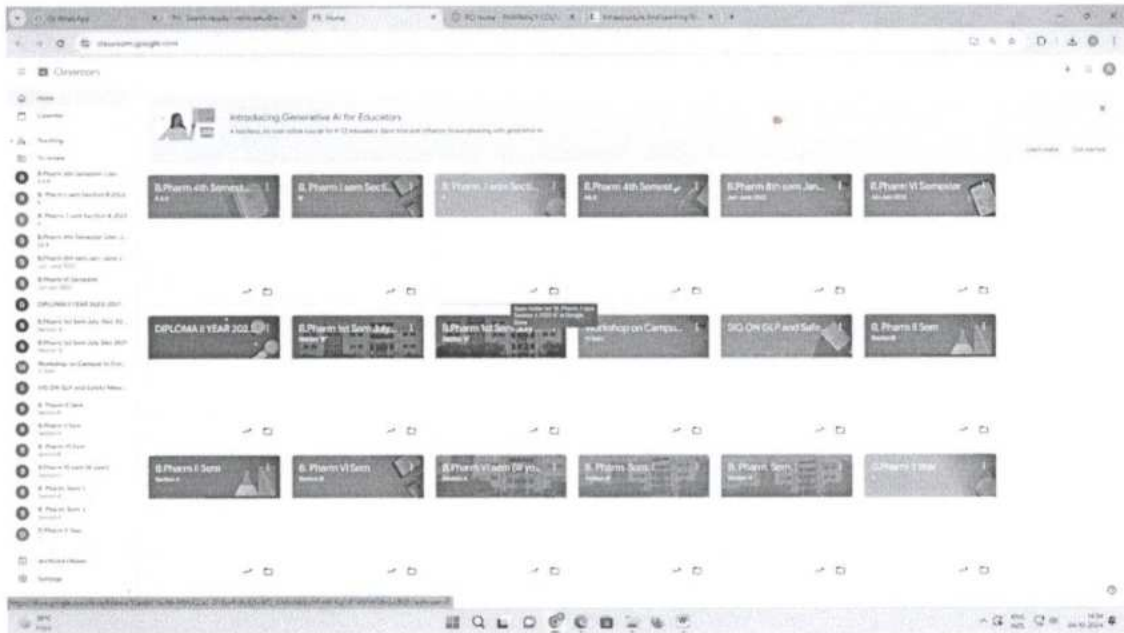


Indore Institute of Pharmacy

Affiliated to - RGPV(Bhopal) (Approved by - AICTE(New Delhi) & PCI(New Delhi)
Register - Under UGC (2/F)



Use of LCD Projector in Classrooms & Labs



Sample Google Classroom



Principal
Indore Institute of Pharmacy,
INDORE (12 P.)